



GAT MONTHLY MEMBERSHIP PROGRESS REPORT

Results as of: 9/30/2022

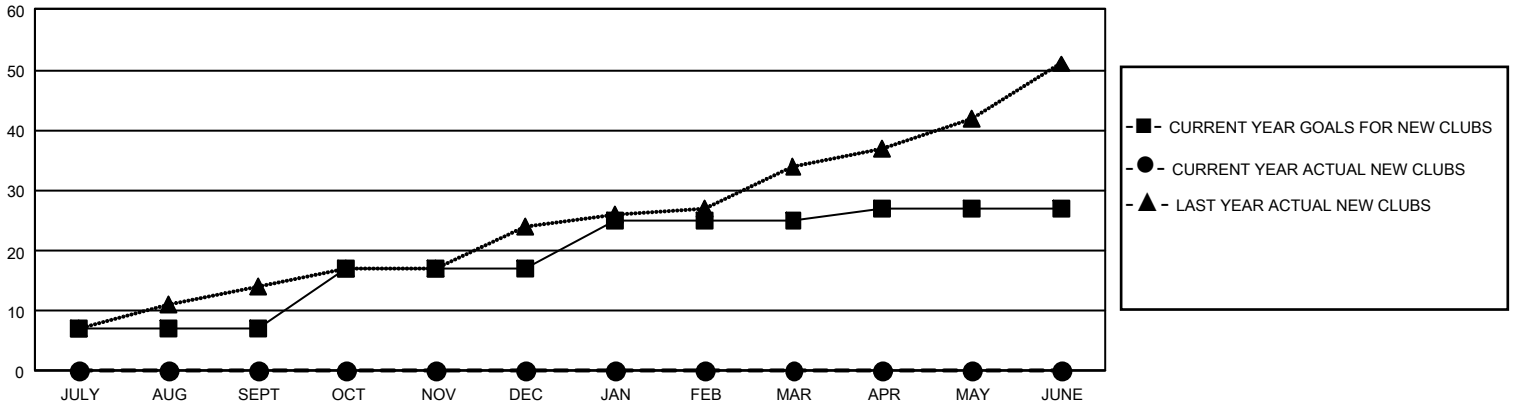
GMT Constitutional Area 8, Group A

REPORT DOES NOT INCLUDE CLUBS IN UNDISTRICTED AREAS.

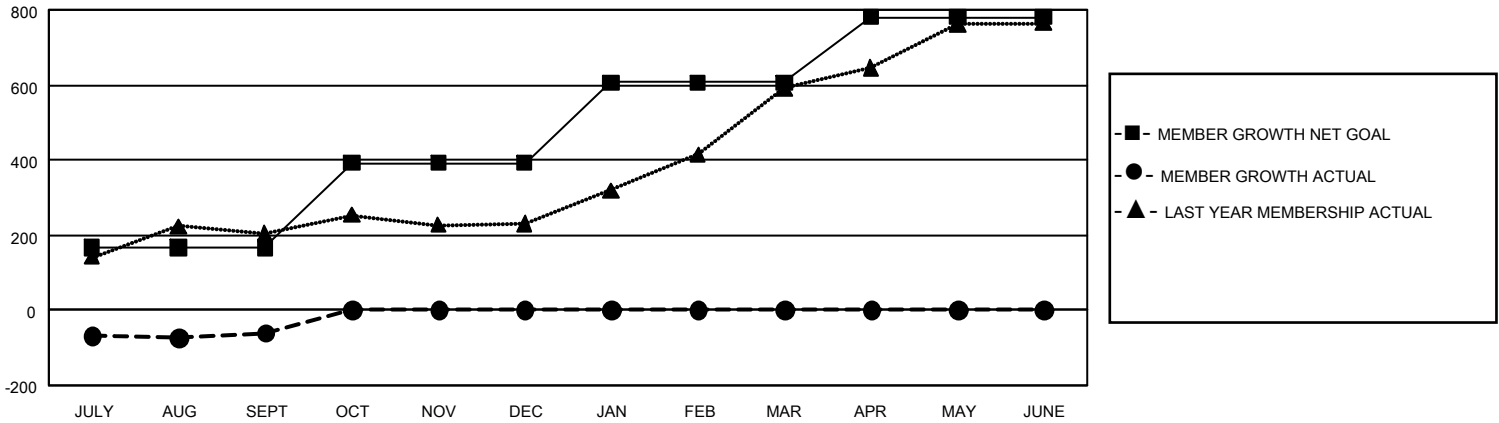
| Clubs | | | |
|-----------------------|---------------|-----------|---------------|
| RESULTS FOR 2022-2023 | | | |
| QUARTER | NEW CLUB GOAL | NEW CLUBS | DROPPED CLUBS |
| JULY/AUG/SEPT | 21 | 0 | 2 |
| OCT/NOV/DEC | 30 | 0 | 0 |
| JAN/FEB/MAR | 24 | 0 | 0 |
| APR/MAY/JUNE | 6 | 0 | 0 |

| Members | | | |
|-----------------------|------------------------|----------------------|--|
| RESULTS FOR 2022-2023 | | | |
| QUARTER | MEMBER GROWTH NET GOAL | MEMBER GROWTH ACTUAL | DROPPED MEMBERS ACTUAL (including transfers) |
| JULY/AUG/SEPT | 167 | 191 | 228 |
| OCT/NOV/DEC | 225 | 0 | 0 |
| JAN/FEB/MAR | 215 | 0 | 0 |
| APR/MAY/JUNE | 174 | 0 | 0 |

GOALS AND ACTUAL NEW CLUBS CUMULATIVE



GOALS AND ACTUAL MEMBERS CUMULATIVE



| | | | |
|--|---|--|-------------------------------------|
| DROPPED CLUBS: 2 | 70 CLUBS OF 391 ADDED 1 OR MORE NEW MEMBERS | GENDER DISTRIBUTION | |
| | | MALE 6,391 (69.85%) FEMALE 2,756 (30.12%) NON BINARY 0 (0.00%) PREFER NOT TO ANSWER 2 (0.02%) | |
| DROPPED MEMBERS | | CLICK HERE FOR CUMULATIVE MEMBERSHIP DATA | TOTAL FAMILY UNIT MEMBERS 195 |
| DECEASED 8 CLUB CANCELLED 35 OTHER 185 TOTAL 228 | | | FAMILY MEMBERS PAYING HALF DUES 102 |